

MEETING OF THE
Expert Team on WORLD DATA CENTRES
(WMO, Geneva, Switzerland, 4 May 2009)

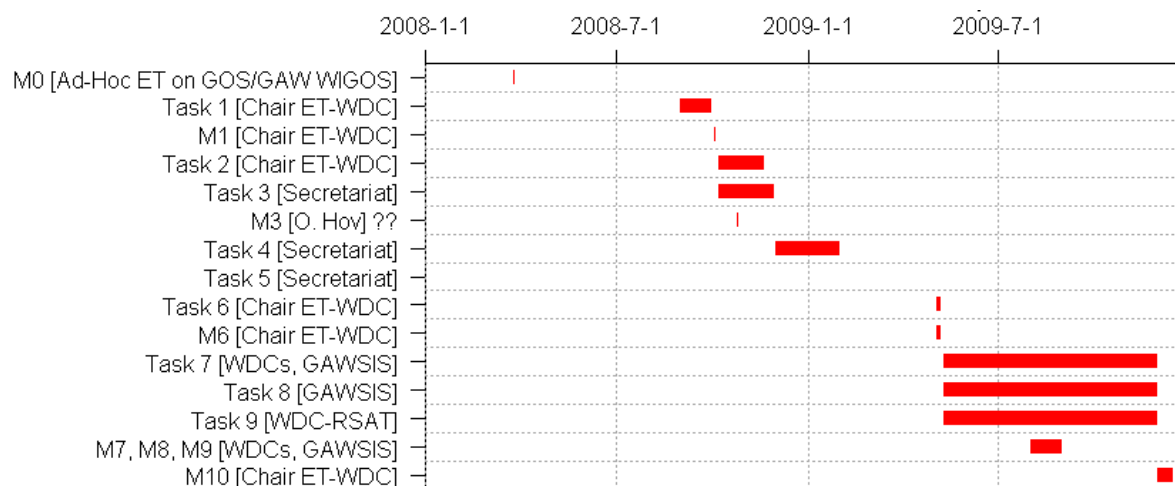
Implementation Plan for the ET-WDC WIGOS-GOS Pilot Project

Draft version 2009-04-02

Background

The Pilot Project Proposal document presented in draft form in St. Petersburg and revised thereafter contains motivation and objectives, and a basic description of the work.

Implementation Plan



Tasks and Milestones

- M0 Request to develop a WIGOS GOS/GAW pilot proposal out of ET-WDC [Ad-Hoc ET on GOS/GAW WIGOS]
- Task 1 Development of draft proposal [Chair ET-WDC]
- M1 Presentation of draft proposal to ET-WDC in SPb [Chair ET-WDC]
- Task 2 Iteration and finalisation of proposal, submission to Secretariat [Chair ET-WDC]
- Task 3 Inquire about WMO internal funding sources [Secretariat]
- M3 Mentioning of proposal at CAS Mgt. Group meeting (Geneva) [L.Jalkanen]
- Task 4 Submission of proposal to EC WG WIGOS/WIS [Secretariat]
- Task 5 Request WDCs to participate [Secretariat]
- Task 6 Presentation of project at JSC meeting (Geneva) [Chair ET-WDC]
- M6 Kick-off meeting during GAW2009 (Geneva), finalisation of Timeline/MS [Chair ET-WDC]
- Task 7 Implementation of ISO-compliant metadata [WDCs, GAWSIS]

MEETING OF THE
Expert Team on WORLD DATA CENTRES
(WMO, Geneva, Switzerland, 4 May 2009)

- Task 8 Implementation of data-extraction/repackaging prototype [GAWSIS]
- Task 9 Implementation of enhanced services to global GAW stations [WDC-RSAT]
- M7-9 Intermediate review of progress and further training [WDCs, GAWSIS]
- M10 Prepare and submit progress report for EC WG WIGOS/WIS [Chair ET-WDC]

Funding

WMO has limited resources (USD26'000) available for the two pilot projects out of CAS (IDOA on NRT data delivery, and this one) for 2009-2010.

The activities of Empa (GAWSIS and the development of a prototype data access tool) are funded during 2009.

Funding is required by each participating GAW WDC to cover most of their own activities.

MEETING OF THE
Expert Team on WORLD DATA CENTRES
(WMO, Geneva, Switzerland, 4 May 2009)

Appendix

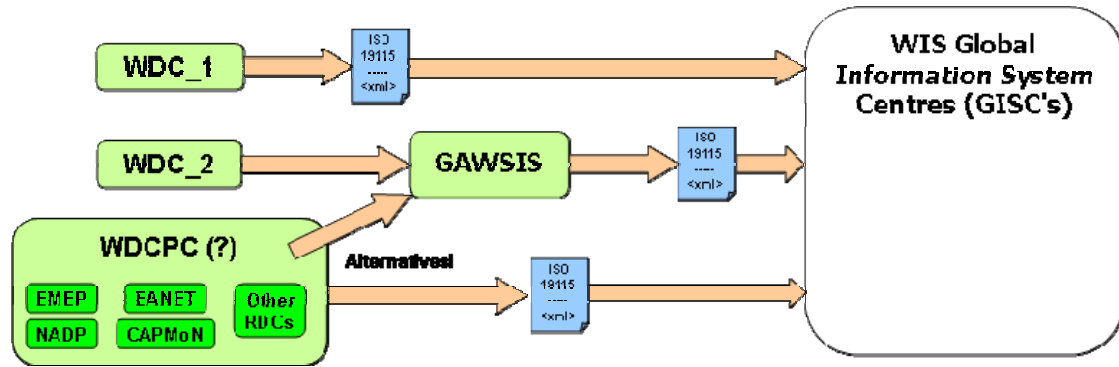


Figure 1. Schematic of SOA (service-oriented architecture) diagram showing possibilities for connecting the various GAW WDCs to WIS

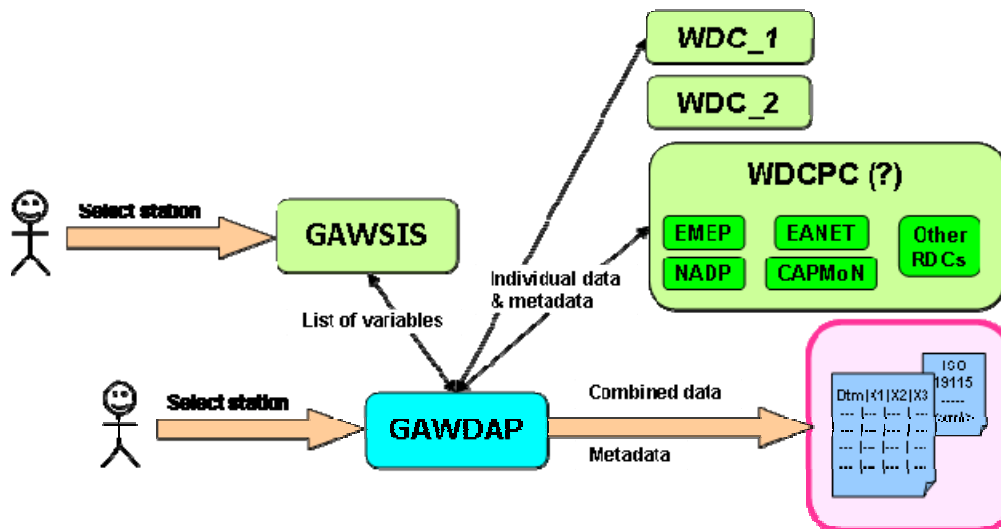


Figure 2. Schematic of SOA (service-oriented architecture) diagram showing the basic idea of provision of combined data sets to (human) users